

KENWOOD

SHEET 2 OF 2 SHEETS
 A SUBDIVISION LOCATED IN SEC. 24, TWP. 44 S., RGE. 42 E., IN
 PALM BEACH COUNTY, FLORIDA.

OWNED AND DEVELOPED BY
CARR & CARR INC.

SCALE 1"=100'



DEC. 1925.

ADDITION TO LAKE WORTH AND GREENACRES CITY

26
26
45
12th
July 3
45
Carr & Carr

DRAWING NUMBER
3-45

DRAWING NUMBER

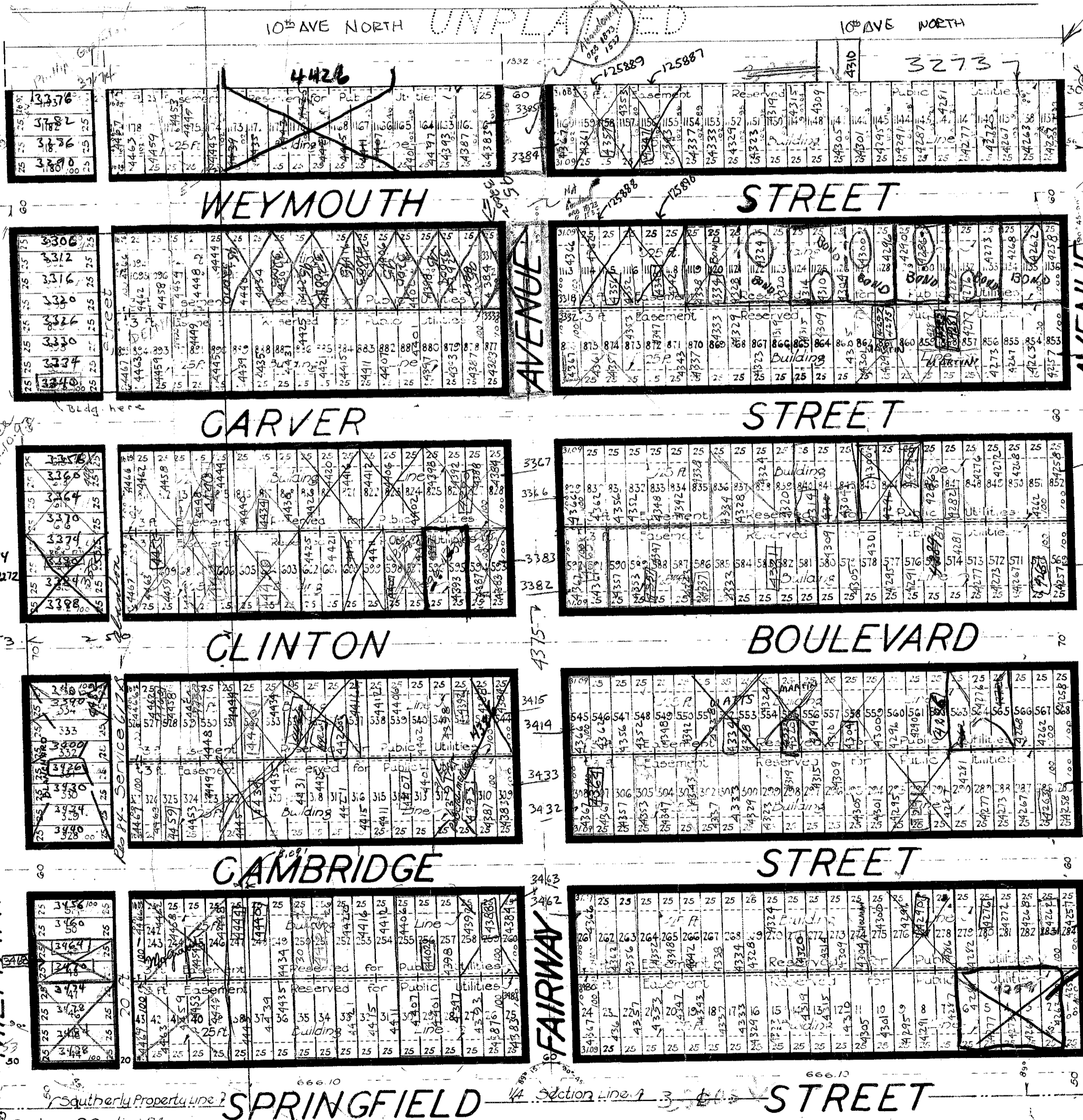
DRAWING NUMBER

DRAWING NUMBER

KENWOOD STREET

TRAIL AVENUE

MILITARY AVENUE



MODEL LAND CO. 5/16



SEE
BACK

PR 15838 12/28/89
 Wooster Moore Corp.

1000-604 PM
 3/45
 B.W.

Lot 247	50	311.09	53
E 8.09' R-1	100	303.00	2.50
W 16.91' C-1	16.09	8.09	503
Cd. Moulton 1973-10-01	186.09	25.00	
	125.00	8.09	
	311.09	10.91	

Approved: Board of County Commissioners
 By: *John R. ...*
 County Engineer.

"Kenwood" - Sheet 2 of 2 Sheets
CARR & MCFADDEN, INC.
 CIVIL ENGINEERS
 FLA. ENG. CERTS. NOS. 173, 280, 667
 WEST PALM BEACH, FLORIDA

Refer to:
 Books 414 ... Page 56, 224
 Draw. Nos. 370, 2155 & R. 1058
 Index:
 Jones & ...
 Client: Carr & Carr, Inc.